

**Head Office:**  
Dixon Kelley Estate Agents  
1 Penn Court  
Station Road, West Moors  
Dorset. BH22 0JJ

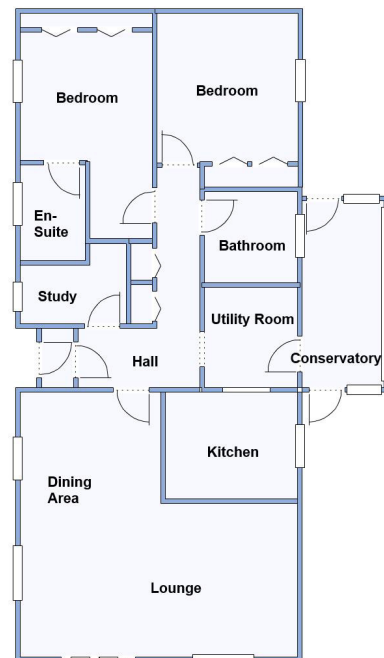
**Telephone: 01202 877511**

# DORSET PARK HOMES

**DRAFT**

[www.dorsetparkhomes.com](http://www.dorsetparkhomes.com)

## 2 Upton Glen Park, Upton, Ringstead, Dorchester, Dorset. DT2 8NE



This drawing has been prepared for diagrammatic purpose only. Not to scale

### 2 Bedroom Park Home approx 46' x 20'

#### Approximate room dimensions & brief description:

- **Entrance Hall:** Cloaks cupboard. Airing cupboard.
- **Kitchen:** approx 9'3" x 7'6". Superb kitchen with Integrated fridge/freezer & dishwasher. Range style cooker. Granite worktops. Electric sky light.
- **Utility Room:** approx 7'1" x 6'7". Gas boiler (untested). Space for washing machine. Door to: Conservatory: approx 13' x 5'9". Doors to garden.
- **Lounge/Dining Room:** approx 19'4" x 18'8" max overall. Electric Sky light. Custom fitted cupboards & display shelving. Patio doors to Sun Terrace
- **Study:** approx 7'4" x 6' max
- **Bedroom 1:** approx 13'9" x 9'4" max Plus built-in wardrobes. & dresser unit. Bay window with blinds.
- **En-Suite Shower Room**
- **Bedroom 2:** approx 10'5" x 9'4". Fitted wardrobes.
- **Bathroom:** Panelled bath, vanity wash basin & WC.
- **Gas Central Heating & PVCu Double-Glazing**
- **Exterior Insulation System inc: Floor Insulation**
- **Large Sun Terrace with wonderful views.**
- **Insulated Shed with power & light.**
- **Double Carport & Workshop approx 18' x 5'6"**
- **Age Restriction 45+ Dogs Considered**

**Price £299,950**

**VIEWING STRICTLY BY APPOINTMENT WITH THE VENDOR'S AGENT Dorset Park Homes 01202 877511**

**IMPORTANT NOTE:** These particulars are believed to be correct but their accuracy is not guaranteed. They do not form part of any contract. Nothing in these particulars shall be deemed to be a statement that the property is in good structural condition or otherwise, nor that any of the services, appliances, equipment or facilities are in good working order or have been tested. Purchasers should satisfy themselves on such matters prior to purchase Ref.W04954

## Wonderful Rural Views



**Pitch Fee: approx £214.15 per month**  
**Subject to Annual Review**  
**Council Tax Band: 'B'**

**Tenure: 1983 Mobile Homes Act Agreement**

*The recommended specialist in Park Home sales*  
Proprietor: Simon Dixon







Lounge/Dining Room



Lounge/Dining Room



Study



En-Suite



Wonderful Setting



Sun Terrace

### Wessex 'Cranborne'

A stunning Park Home with attention to detail throughout. Vaulted ceilings with electric skylight windows instantly let you know this home is of the highest standards and the fixtures and fittings have all been carefully chosen to give a modern contemporary feel. The home is located in an elevated position on this quality residential park nestled in the Dorset countryside and has enviable rural views.

Viewing is a must!



Elevated Position

Wonderful Rural Setting close to Jurassic Coast



DORSET  
PARK HOMES



DORSET  
PARK HOMES