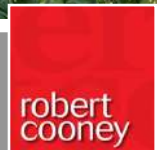




Sherford House Sherford Road, Taunton TA1 3RB







In the quiet backwater of Sherford and dating back to the 1600's is this impressive Grade II \* Listed family home set in walled gardens of about 0.75 acre. On the market for the first time in over 60 years, this iconic property with many period features has 6 bedrooms, three reception rooms, outdoor swimming pool, 45' two storey barn with great potential for a variety of uses.







## Features

- Entrance Hall
- Living Room with Inglenook fireplace, gas fire and door to garden
- Dining Room
- Fitted Kitchen / Breakfast Room with Belfast sink, Aga and French doors to garden
- Snug with French doors to garden
- Utility Room
- Cloakroom
- Bedroom 6 on ground floor with fitted wardrobes and Ensuite Shower Room
- Bedroom 1 with fitted wardrobe and Ensuite Shower Room
- 4 further Bedrooms
- Family Bathroom
- Established South facing walled gardens of 0.75 acre with vegetable garden, greenhouses and storage shed
- Outdoor swimming pool
- Two storey stone barn with great potential
- Garaging and ample driveway parking
- Gas central heating
- Council tax band G
- What3words:  
///tribal.clouds.gain





























Sherford House is situated within easy reach of the centre of Taunton, the County Town of Somerset and within walking distance of Vivary Park.

The town is a bustling, forward-looking town with excellent amenities, a good selection of independent and high street shops, distinctive restaurants, cafés, a wealth of history and sporting facilities including the County Cricket Ground.

Taunton benefits from a main line railway station linking to London Paddington in less than 2 hours and excellent communications for the M5 motorway at junction 25, situated on the eastern side of the town.

Taunton also offers a good selection of both state and independent schools including Castle School, Taunton School, King's and Queen's Colleges and Richard Huish Sixth Form College.

For rural pursuits, the Brendon, Blackdown and Quantock Hills lie within easy reach and further West, Exmoor National Park provides excellent walking, riding and cycling.





# Sherford House, Sherford Road, Taunton, TA1 3RB

Approximate Area = 3250 sq ft / 301.9 sq m (excludes store)

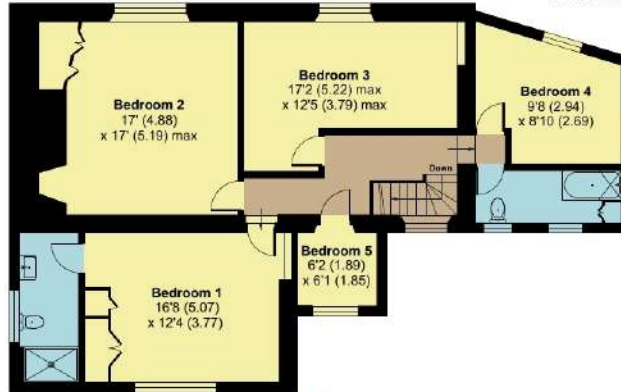
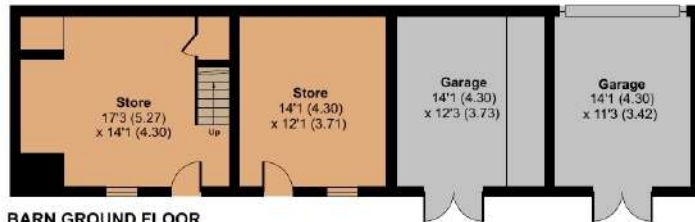
Barn = 780 sq ft / 72.4 sq m

Garages = 331 sq ft / 30.7 sq m

Outbuildings = 345 sq ft / 32 sq m

Total = 4706 sq ft / 437 sq m

For identification only - Not to scale



Floor plan produced in accordance with RICS Property Measurement Standards incorporating International Property Measurement Standards (IPMS2 Residential). © nitchcom 2024. Produced for Robert Cooney. REF: 1181898

Viewing strictly through the selling agents:

**Robert Cooney**

Corporation Street, Taunton,  
Somerset TA1 4AW

Telephone 01823 230 230

E-mail [taunton@robertcooney.co.uk](mailto:taunton@robertcooney.co.uk)

Website [www.robertcooney.co.uk](http://www.robertcooney.co.uk)

**robert  
cooney**



