



22 Thames Drive Taunton TA1 2NL

Offers in excess of £275,000

robert
cooney



In this convenient location within about 1.5 miles of the centre of town is this well presented South facing 3 bedroomed semi-detached house with enclosed garden to the rear, garage and driveway parking.





Features

- Entrance Hall
- Living Room
- Kitchen / Dining Room with French doors to garden
- Master Bedroom with fitted wardrobe
- 2 Further Bedrooms, Bedroom 2 with fitted wardrobe
- Family Bathroom

- Enclosed Garden to rear with storage shed
- Garage and driveway parking

- Gas central heating
- Double glazing

- Council tax band C

- What3words:
///rice.mailings.strikers



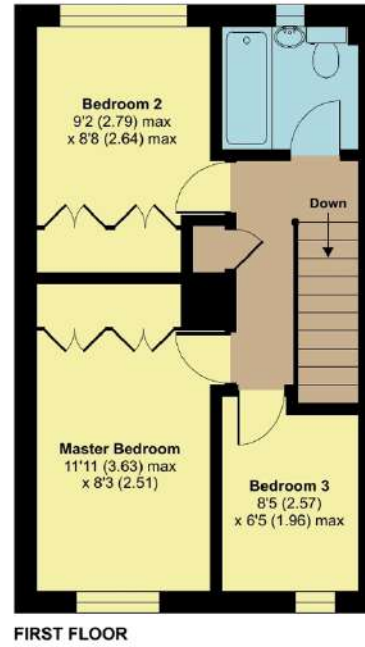
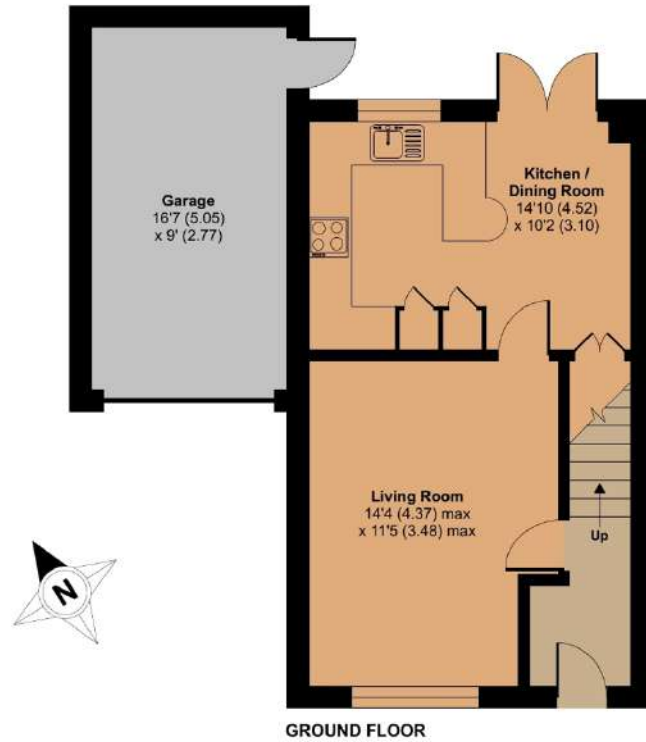
22 Thames Drive, Taunton, TA1 2NL

Approximate Area = 770 sq ft / 71.5 sq m

Garage = 150 sq ft / 13.9 sq m

Total = 920 sq ft / 85.4 sq m

For identification only - Not to scale



Viewing strictly through the selling agents:

Robert Cooney

Corporation Street, Taunton,
Somerset TA1 4AW

Telephone 01823 230 230

E-mail taunton@robertcooney.co.uk

Website www.robertcooney.co.uk



Floor plan produced in accordance with RICS Property Measurement Standards incorporating International Property Measurement Standards (IPMS2 Residential). © nchocom 2023. Produced for Robert Cooney. REF: 1004416



For clarification, we wish to inform prospective purchasers that: these particulars are set out as a general outline only for the guidance of intended purchasers, and do not constitute, nor constitute part of, an offer or contract; all descriptions, dimensions, references to condition and necessary permission for use and occupation, and other details, are given without responsibility and any intending purchasers should not rely on them as statements or representation of fact, but must satisfy themselves by inspection or otherwise as to the correctness of each of them; no person in the employment of Robert Cooney has any authority to make or give any representation or warranty whatever in relation to this property; we have not carried out a detailed survey nor tested the services, appliances and specific fittings.

**robert
cooney**