



Property Features

- Large 4 Bedroom Town House
- Close to the Rye and M40
- B Energy Rating
- Living Room and Family Room
- Equipped Kitchen open to the Dining Room
- 3 Bathrooms (2 Ensuites and Jack and Jill)
- Stunning Secluded Rear Gardens
- Side Garden with Seating Area
- Driveway and Large Garage
-

Full Description

Welcome to 1 Coopers Rise, an exquisite and spacious 4-bedroom townhouse situated on a beautifully maintained corner plot. This stunning property is within walking distance of The Rye, offering a perfect blend of convenience and tranquility.

Location

1 Coopers Rise boasts excellent connectivity, with easy access to the M40 and High Wycombe Train Station, making it an ideal location for commuters.

Ground Floor

Upon entering the property, you are greeted by a welcoming Entrance Hall that leads to a versatile Family Room. The Family Room features doors that open onto a private seating area, perfect for outdoor relaxation. Additionally, the ground floor includes a practical Utility Room and a spacious Bedroom with an Ensuite, providing comfortable accommodation for guests or family members.

First Floor

The first floor is designed for modern living, featuring a generous Living Room, and a beautiful open-plan Kitchen and Dining Room. The Kitchen is equipped with high-quality fitted appliances, making it a chef's delight and perfect for entertaining. Sill served by a Cloakroom

Second Floor

The second floor houses three further well-proportioned bedrooms. The Main Bedroom is a luxurious retreat with a Walk-in Wardrobe and a stylish Ensuite. Bedroom 2 benefits from a Jack and Jill bathroom, providing convenience and functionality for family living.

Exterior

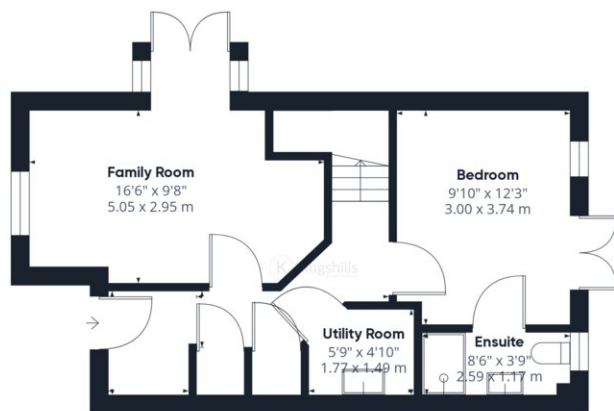
The property is surrounded by meticulously maintained gardens. To the rear, the low-maintenance garden offers a high degree of privacy and includes a secluded seating area accessible via side access. The front of the property features a driveway leading to a large garage, providing ample parking and storage space.

Summary

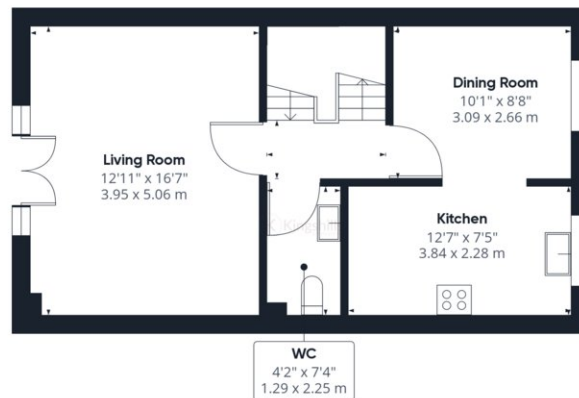
1 Coopers Rise is a superb family home offering spacious and versatile accommodation across three floors. With its prime location, beautiful gardens, and modern amenities, this property presents a unique opportunity to enjoy a convenient and comfortable lifestyle. Don't miss the chance to make this exceptional townhouse your new home.



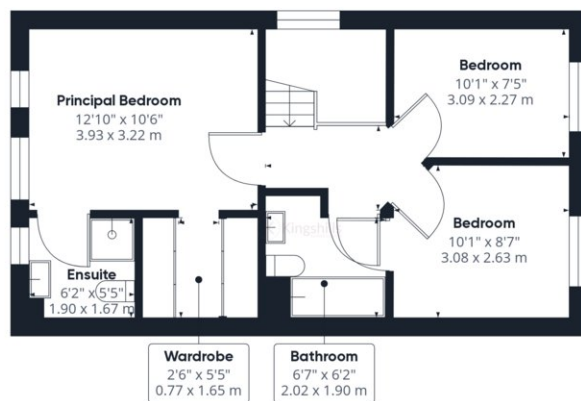




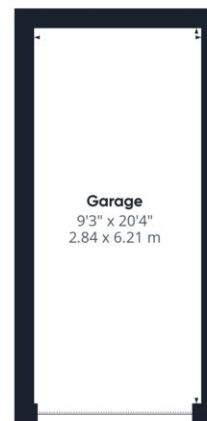
Ground Floor Building 1



Floor 1 Building 1



Floor 2 Building 1



Ground Floor Building 2

Approximate total area⁽¹⁾
1585.82 ft²
147.33 m²

(1) Excluding balconies and terraces

While every attempt has been made to ensure accuracy, all measurements are approximate, not to scale. This floor plan is for illustrative purposes only.

GIRAFFE360