



BOSTON MANOR ROAD, BRENTFORD, GREATER LONDON, TW8

Guide Price: **£950,000**



 Leslie & Co









## About the property

What the owners love...

We absolutely love the location of the house. It is a stone's throw from two beautiful parks, near a tube station and in the catchment for fantastic local primary and secondary schools. The neighbours are fantastic and there is a real sense of community along our stretch of houses.

The proportions of the house are excellent. All of the rooms are large with high ceilings. Houses of this size in our area are a rarity. Unusually, all 5 bedrooms are doubles, even the 'box' room. Buyers could also consider easily reinstating the loft as one huge principle bedroom, if they were so inclined.

We purchased the house in 2014 as a renovation project and have spent the past ten years lovingly refurbishing it to a high standard. The house has been renovated to live in and has served our family of 5 well now for a decade.



### Key features

- Stunning Family Home
- Five Bedrooms
- Exceptional South-West Facing Private Garden
- Garden Office / Gym
- Beautifully Renovated Throughout
- Over 1800 Sq Ft
- Close to Wonderful Parks
- Excellent Transport Links
- Envious School Catchment
- Buyer Information Pack Available

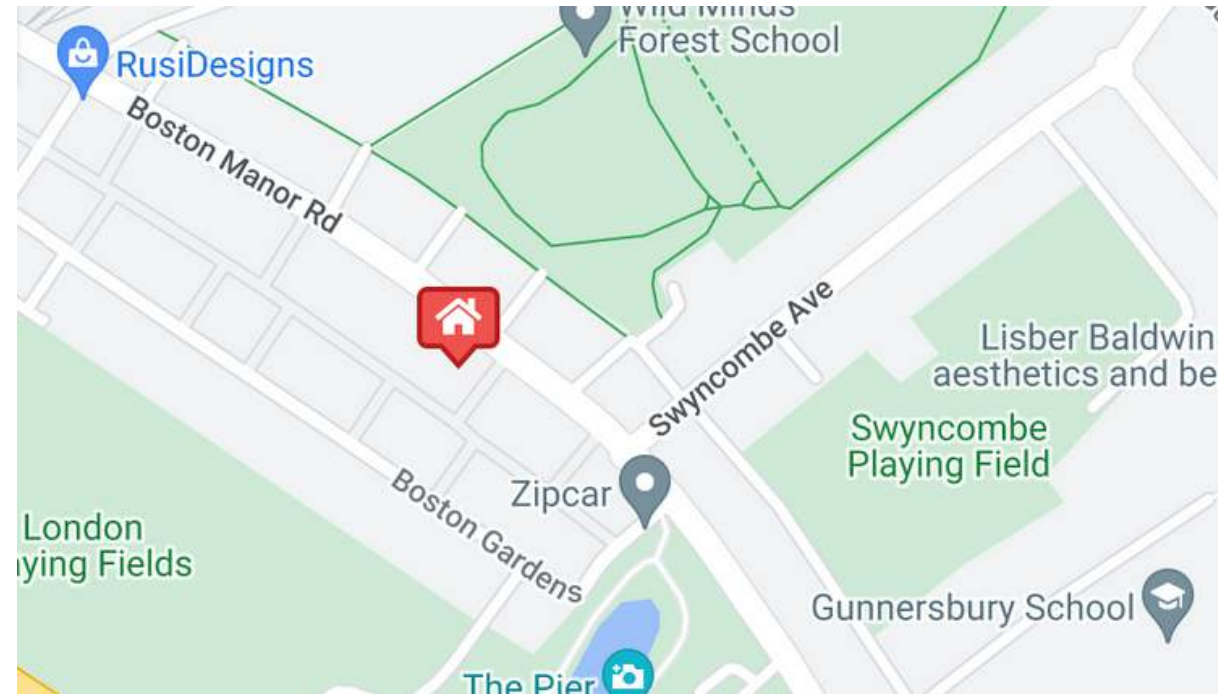
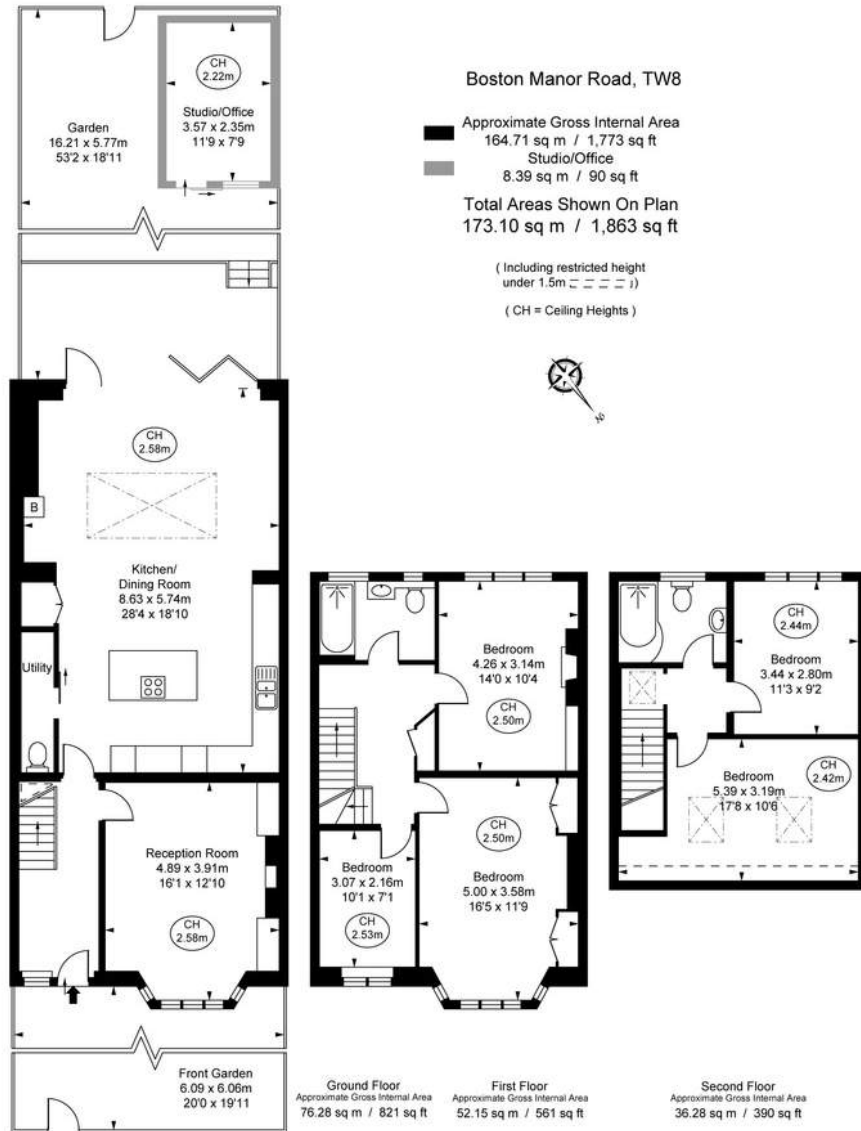
### Material information

- Tenure - **Freehold**
- Council Tax - **Band E**
- Guide Price - **£950,000**

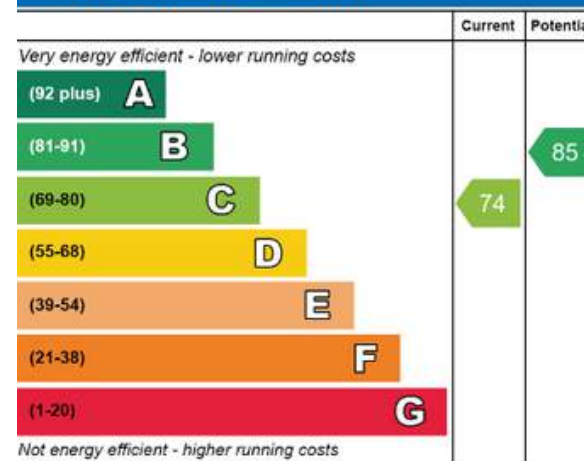


**PAUL LESLIE**

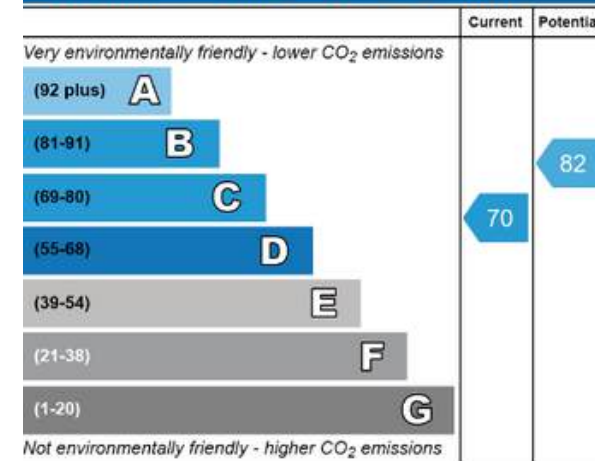
Director  
 020 3488 6445  
 07738 401 822  
 paul@leslieandcompanyuk.com



### Energy Efficiency Rating



### Environmental Impact (CO<sub>2</sub>) Rating



This plan is not to scale. It is for guidance and not for reliance purposes. All measurements and areas are approximate only, and have been prepared in accordance with the current edition of the RICS Code of Measuring Practice. © Crown Intellectual Property.