

Head Office:
Dixon Kelley Estate Agents
1 Penn Court
Station Road, West Moors
Dorset. BH22 0JJ

DORSET PARK HOMES

DRAFT

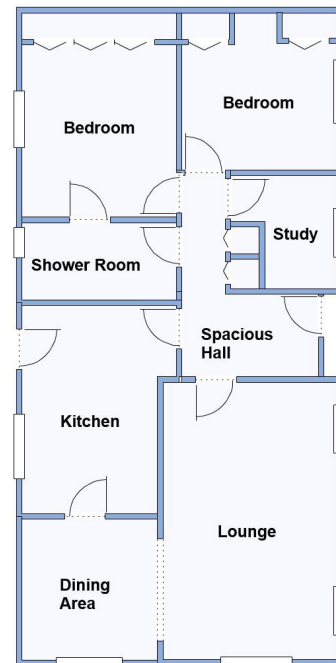
Telephone: 01202 877511

www.dorsetparkhomes.com

23 Gladelands Park, Ringwood Road, Ferndown. BH22 9BW



Spacious Park Home close to amenities



This drawing has been prepared for diagrammatic purpose only. Not to scale

2 Bedroom Park Home approx 40' x 20'

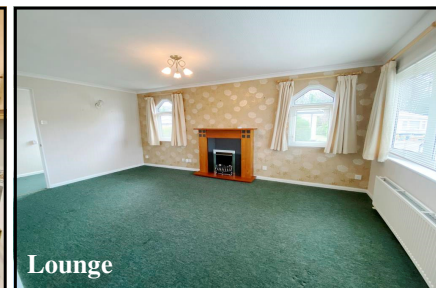
Accommodation & approximate room dimensions:

- 'Countryhomes' Park Home circa 2003
- Spacious Hall: Cloaks cupboard & linen cupboard.
- Kitchen: approx 12'4" x 9'6" max. Range of floor and wall cupboards. Built-in oven, hob & cooker hood. Cupboard housing combination gas boiler. Space for fridge/freezer & washing machine. Door to garden.
- Dining Area: approx 8'8" x 6'6". Archway to:
- Lounge: approx 17' x 10'8". Feature fireplace.
- Study: approx 7' x 6'8" max.
- Bedroom 1: approx 10'9" x 9'6". Fitted wardrobes.
- Bedroom 2: approx 9'8" x 9'6". Fitted wardrobes.
- Shower Room: Large shower cubicle with thermostatic shower. Vanity wash basin & WC.
- Gas Central Heating & PVCu Double-Glazing
- Small Garden with Concrete Shed.
- Parking on Plot—Block Driveway
- Age Restriction 50+ No Pets Allowed
- Well Maintained Residential Park in convenient location close to local amenities, major supermarkets & bus services.

Parking on Plot



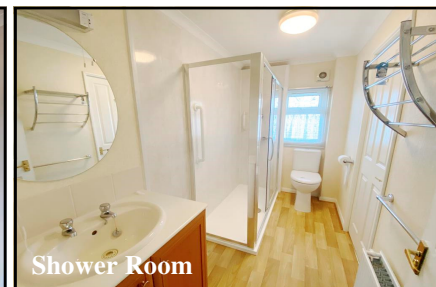
Kitchen



Lounge



Dining Area



Shower Room

Price £150,000

Pitch Fee: approx £240.45 per month

Subject to Annual Review

Council Tax Band: 'A'

Tenure: 1983 Mobile Homes Act Agreement

VIEWING STRICTLY BY APPOINTMENT WITH THE VENDOR'S AGENT Dorset Park Homes 01202 877511

IMPORTANT NOTE: These particulars are believed to be correct but their accuracy is not guaranteed. They do not form part of any contract. Nothing in these particulars shall be deemed to be a statement that the property is in good structural condition or otherwise, nor that any of the services, appliances, equipment or facilities are in good working order or have been tested. Purchasers should satisfy themselves on such matters prior to purchase Ref.W04928

The recommended specialist in Park Home sales
Proprietor: Simon Dixon

