



Property Features

- No onward chain
- 4 bedrooms
- Quiet cul de sac location
- Recently renovated
- Close to local schools
- Beautifully presented

Full Description

This beautifully presented light and spacious property offers 4 bedrooms, ideal for families or professionals located in the sought after town of Marlow set on the River Thames. The property benefits from easy access to the M40, M4 and Heathrow, making it an ideal base for commuters. Situated in a quiet cul de sac with easy access to the town, station and local amenities.

Ground floor consists of entrance hall, spacious sitting room, modern kitchen/breakfast room, dining room, cloakroom. On the first floor there is a master bedroom with built in wardrobes, 3 further good size bedrooms and a family bathroom. There is ample off street parking and a single garage.

The property is well placed for access to a selection of Primary and Secondary Schools within walking distance and is in the catchment for Buckinghamshire's prestigious Grammar Schools.

Marlow has excellent sports and social facilities, a busy High Street with a variety of shops and excellent restaurants. Marlow's Higginson park is delightful with a recently revamped playground and offers Riverside walks and Boat Trips and many events each year including the Town Regatta & Pub in the Park.

Marlow railway station links trains via Maidenhead to London Paddington which links to the Elizabeth Line. The M4 and M40 are accessible, via the Marlow Bypass, at Maidenhead & High Wycombe respectively



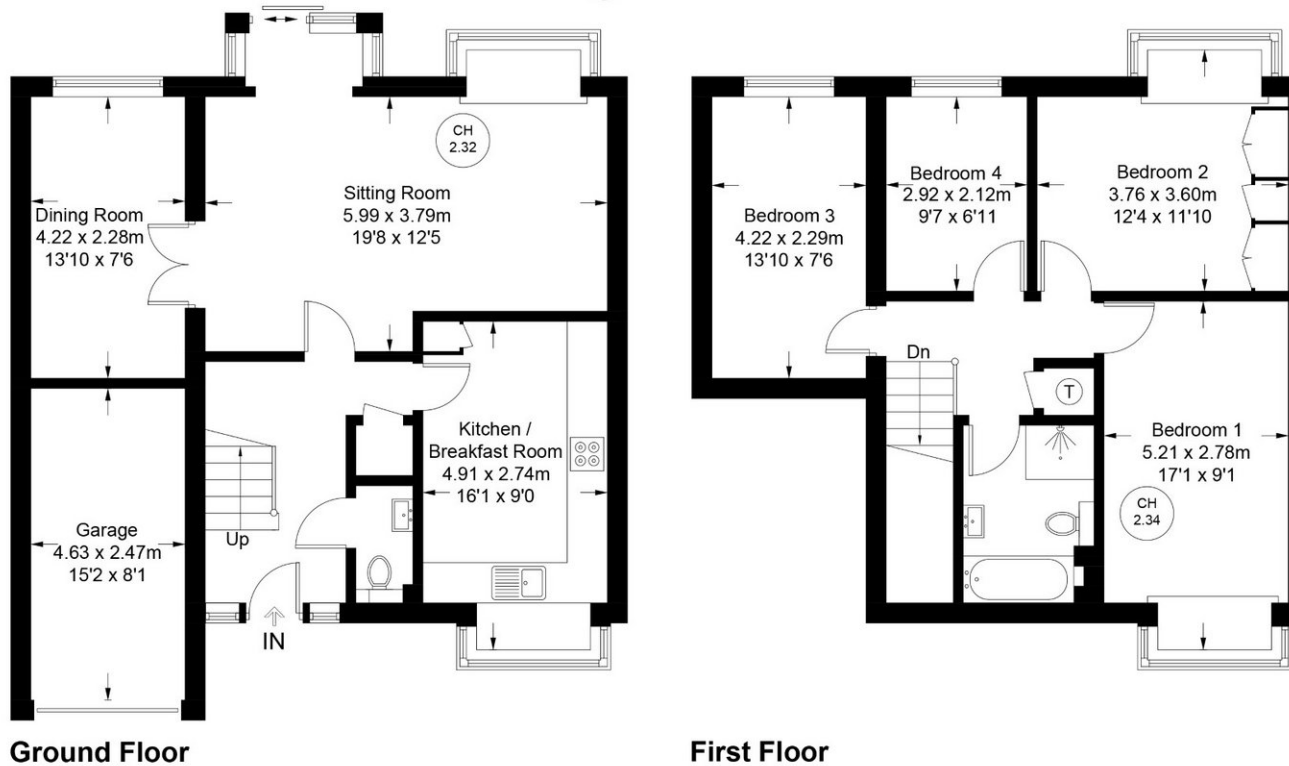


Redshots Close

Approximate Gross Internal Area
Ground Floor = 59.3 sq m / 638 sq ft
First Floor = 58.6 sq m / 631 sq ft
Garage = 10.7 sq m / 115 sq ft
Total = 128.6 sq m / 1384 sq ft



CH
2.32 = Ceiling Height



Floor Plan produced for Kingshills by Media Arcade ©.

Illustration for identification purposes only. Window and door openings are approximate. Whilst every attempt is made to assure accuracy in the preparation of this plan, please check all dimensions, shapes and compass bearings before making any decisions reliant upon them.

Kingshills Estate Agents
Covering Marlow
Bourne End, Maidenhead
& Surrounds

01628 561222
davidandsusan@kingshills.co.uk
kingshills.co.uk

Agents Note: Whilst every care has been taken to prepare these particulars, they are for guidance purposes only. All measurements are for general guidance purposes only and whilst every care has been taken to ensure accuracy, they should not be relied upon and potential buyers/tenants are advised to recheck the measurements