

Tayfen Road | Bury St Edmunds | | IP33 1AS

Shared Ownership £80,000

Resale Shared Ownership Modern 1 bedroom shared ownership apartment with Havebury Housing Partnership on the Hops Court development. This first floor apartment is located centrally in one of Suffolk's most highly regarded town. Price based on a 40% share with the option to purchase more initially.

- Modern
- Resale Shared Ownership
- First Floor
- 1 Bedroom
- Easy Access To Train Station
- Close To town Centre
- Advertised at a 40% Share

Approximate Room Sizes

ENTRANCE

KITCHEN/DINER/LIVING ROOM 18' 7" x 16' 4" (5.66m x 4.98m)

BEDROOM ONE 12' 5" x 12' 0" (3.78m x 3.66m)

BATHROOM 7' 2" x 6' 2" (2.18m x 1.88m)

AGENTS NOTE Full Market Price £200,000

Share 40% - £80,000

60% Rent £279.46

Service Charge £75.05

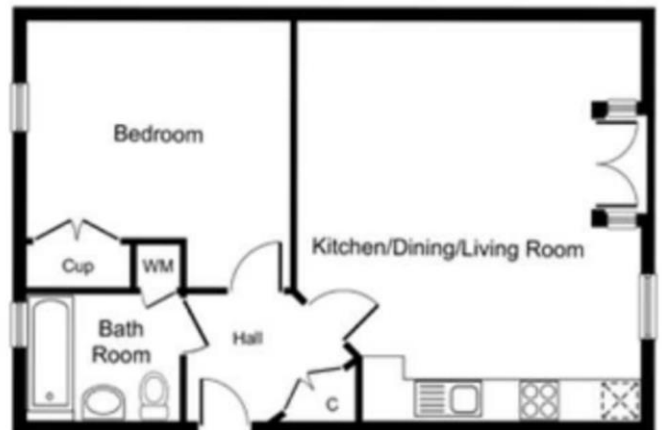
Local Authority – West Suffolk Council

Council Tax Band – A

Tenure – Leasehold

Services – Gas Central Heating

Post Code – IP33 1AS



Energy Efficiency Rating

Score	Energy rating	Current	Potential
92+	A		
81-91	B	83 B	83 B
69-80	C		
55-68	D		
39-54	E		
21-38	F		
1-20	G		

Contact Details

6 The Traverse, Bury St Edmunds, IP33 1BJ

Tel: 01284 769598

Email: burystedmunds@bychoice.co.uk

Agents Note: Whilst every care has been taken to prepare these sales particulars, they are for guidance purposes only. All measurements are approximate and are for general guidance purposes only and whilst every care has been taken to ensure their accuracy, they should not be relied upon and potential buyers are advised to recheck the measurements

