



16 The Hassacks,
Shrewsbury, SY1 4UA

£280,000

A well appointed modern three bedroom semi-detached property situated in a popular residential neighbourhood. Improved throughout, the hassacks offers an abundance of excellent qualities, Spacious living accommodation . Situated within close proximity to a range variety of amenities and local schooling and is well placed for access to Shrewsbury town centre and local by-pass. Viewing is is highly recommended.

Semi-detached House







Full Description

Located in a desirable location this property boasts ample living space, modern fixtures and fittings, and a charming exterior. Providing excellent road links and local amenities nearby, viewing of this property is highly recommended by the selling agent.

Upvc Entrance Door - With matching side window to:

Reception Hall - Upon entering the property Newly installed Carpet flooring, another internal door to the main Lounge

Lounge/Living room - 5.23m (17ft 2in) X 4.26m (13ft 11in)- Carpet flooring, electric fire with mantelpiece and feature fireplace, radiator below window, double glazed window to the front aspect, under stairs storage area, solid door to kitchen / diner.

Dining/Kitchen - 6.10m(20ft) x 3.20m (10ft 6in)

Dining Area - Carpet flooring, radiator under window, adjacent to breakfast bar with ample space for a full sized dining table.

Kitchen - Range of cupboards and drawers to work surface areas, provision for cooker with space for an over cooker extractor fan, single drainer sink unit, double glazed window to the rear, carpeted

Utility Room 2.43m(7ft 11in) x 2.30m(7ft 7in)

- base units, provision for washing machine and dishwasher, radiator, uPVC door and window to the side, access to the garage.



Landing - Carpet flooring, double glazed window to the side, radiator, airing cupboard enclosing the gas fired central heating boiler, access to loft and access to three bedrooms and bathroom.

Bedroom 1 - 3.85m (12ft 7in) x 3.00m (9ft 10 in) - Double glazed window to the front aspect, carpet flooring, radiator, three built-in wardrobes.

Bedroom 2 - 2.90m(9ft 6in) x 2.67m (8ft 9 in) - Double glazed window to the rear elevation, carpet flooring, radiator, built-in wardrobe.

Bedroom 3 - 2.75m(8ft 11in) x 2.11m (6ft 11in)- Double glazed window to the front aspect, carpet flooring, radiator, built-in over stairs cupboard.

Bathroom - Comprising: WC, wash hand basin with mirror cabinet, bath, shower to bath area, tiled splash areas, double glazed opaque window, towel radiator, carpet flooring,.

Outside - The property is approached over driveway providing off road parking, the front garden is laid to lawn with borders, flowers and shrubs. Gated side access to the rear.

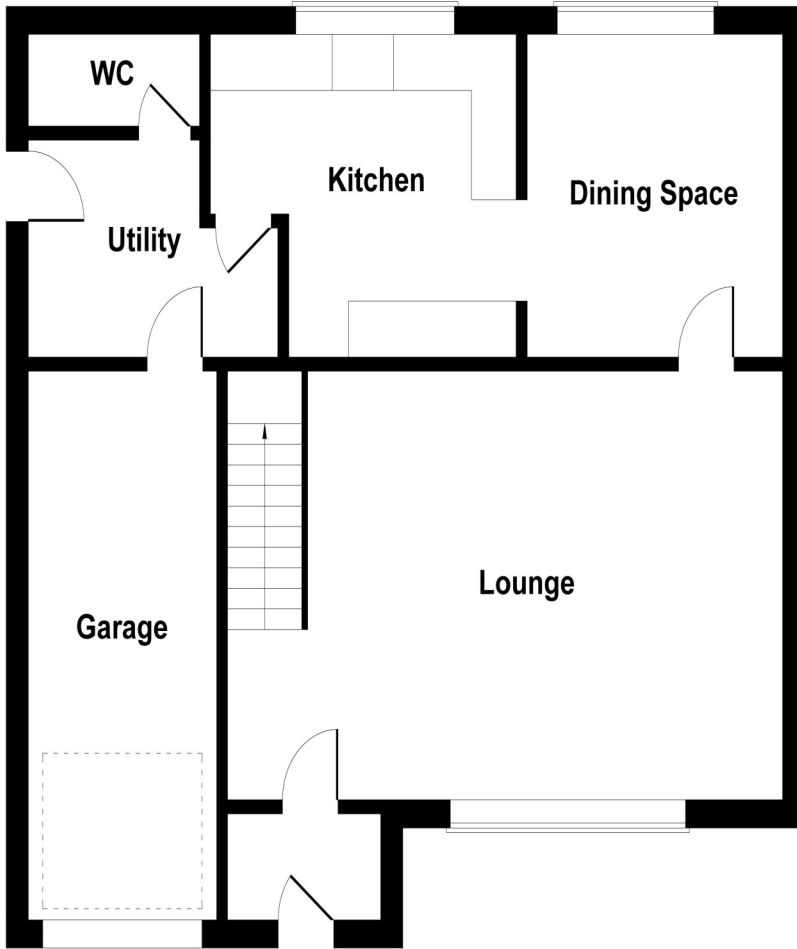
Garage - 5.23m(17ft 2in) x 2.40m(7ft 10in) - Power and lighting.

Rear Garden - A lovely decking area is adjacent to the dining area, a neatly kept lawn area with flower, shrub and gravelled borders. There is a raised decking area to the corner approached over the lawn via stepping stone pathway.

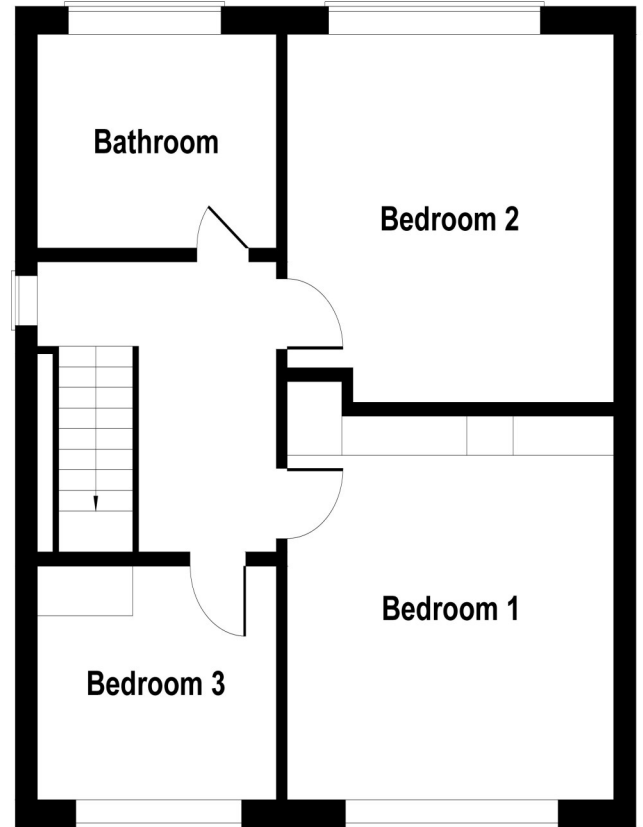
Tenure We are advised that the property is Freehold and this will be confirmed by the Vendors Solicitor during the Pre- Contract Enquiries. Vacant possession upon completion.

.Local authority Council Tax Band C . Shropshire Council, Shirehall, Shrewsbury

16, The Hassacks, Shrewsbury, Shropshire, SY1 4UA



GROUND FLOOR



FIRST FLOOR

Not to Scale. Produced by The Plan Portal 2024
For Illustrative Purposes Only.

