

RENT: £3,800 PCM

3 Tasker Road, London, NW3 2YR



Features

- Stunning apartment, immaculately presented,
- beautiful reception room with bi-folding doors,
- Open plan kitchen dining room, principal en suite bedroom, Second double

The Property

Nestled away in this desirable cul-de-sac location and entered via its private entrance, this stylish 2 bedroom, 2 bathroom apartment is stunning. The entertaining space is exceptional, incorporating a smart modern kitchen diner being open plan to a beautiful reception room with bi-folding doors to the fabulous garden.

The characterful master bedroom with wooden floors is full of light from two large sash windows, has fitted wardrobes and its own shower. The guest bedroom is served by a shower room and a further cloakroom/w.c.

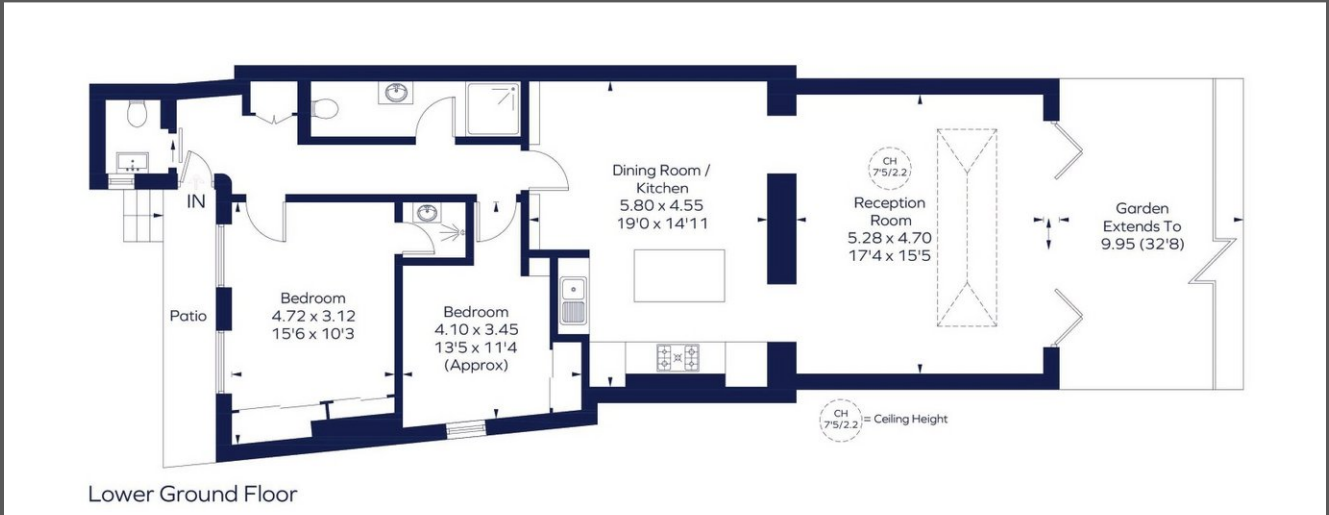
A quiet turning set off Parkhill Road, the flat is suitably convenient for the restaurants, cafes and underground station of Belsize Park, with nearby South End Green, Hampstead Heath mainline station and the open spaces of

Greenford

322 Ruislip Road East, London, UB6 9BH
020 3962 9244
info@starestateagents.co.uk



FLOORPLAN



EPCs

Energy Efficiency Rating		Current	Potential
<i>Very energy efficient - lower running costs</i>			
(92 plus) A			
(81-91) B			
(69-80) C		71	78
(55-68) D			
(39-54) E			
(21-38) F			
(1-20) G			
<i>Not energy efficient - higher running costs</i>			

Greenford

322 Ruislip Road East, London, UB6 9BH
 020 3962 9244
 info@starestateagents.co.uk

