



67 Churchill Way Taunton TA1 3QX

£260,000





Located in this popular area within walking distance of the town centre and Vivary Park is this well presented 2 double bedrooomed semi-detached house with enclosed South East facing garden to rear, garage and driveway parking.





Features

- Entrance Hall
- Living Room
- Conservatory with doors to garden
- Fitted Kitchen
- Master Bedroom
- Further double bedroom
- Family Bathroom with separate shower

- Enclosed South-East facing garden to rear with feature pond
- Store
- Garage and driveway parking

- Gas central heating
- Double glazing
- Castle School Catchment

- Council tax band B

- What3words:
///clock.nets.snack



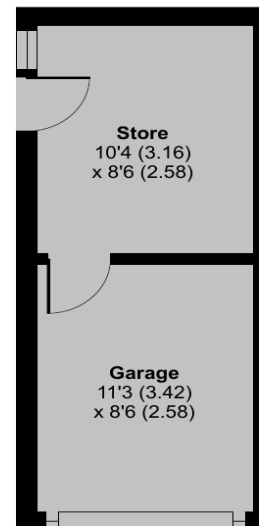
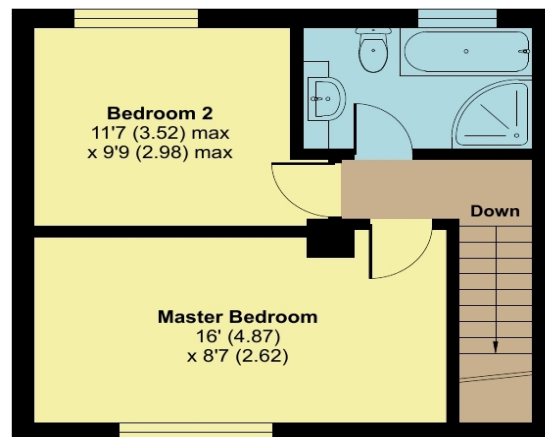
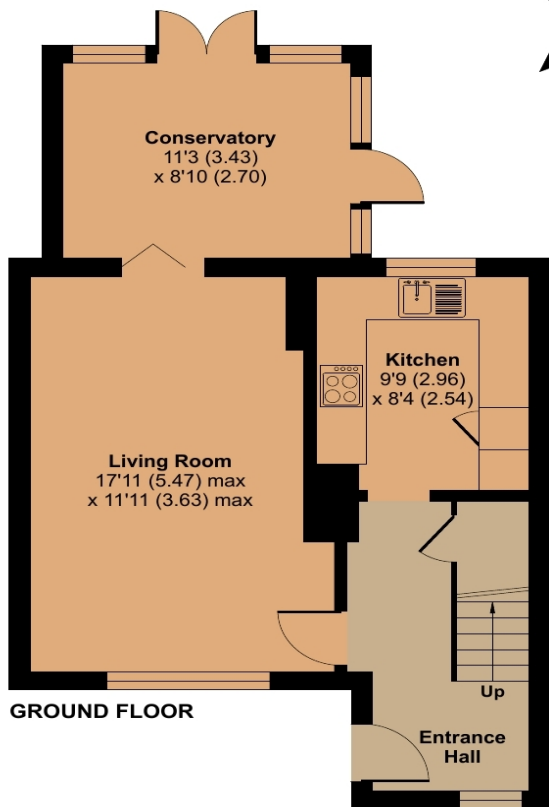
67 Churchill Way, Taunton, TA1 3QX

Approximate Area = 842 sq ft / 78.2 sq m

Garage & Store = 187 sq ft / 17.4 sq m

Total = 1029 sq ft / 95.6 sq m

For identification only - Not to scale



Viewing strictly through the selling agents:

Robert Cooney

Corporation Street, Taunton, Somerset
TA1 4AW

Telephone 01823 230 230

E-mail taunton@robertcooney.co.uk

Website www.robertcooney.co.uk

Energy Efficiency Rating	
Current Rating	Potential Rating
A	C
B	D
C	E
D	F
E	G

Floor plan produced in accordance with RICS Property Measurement 2nd Edition, Incorporating International Property Measurement Standards (IPMS2 Residential). © ncthemcom 2025. Produced for Robert Cooney. REF: 1226764



For clarification, we wish to inform prospective purchasers that: these particulars are set out as a general outline only for the guidance of intended purchasers, and do not constitute, nor constitute part of, an offer or contract; all descriptions, dimensions, references to condition and necessary permission for use and occupation, and other details, are given without responsibility and any intending purchasers should not rely on them as statements or representation of fact, but must satisfy themselves by inspection or otherwise as to the correctness of each of them; no person in the employment of Robert Cooney has any authority to make or give any representation or warranty whatever in relation to this property; we have not carried out a detailed survey nor tested the services, appliances and specific fittings.