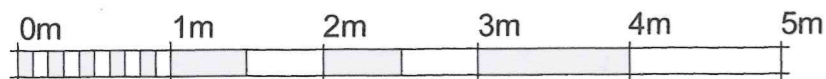


1 Ground Floor - Plot 5

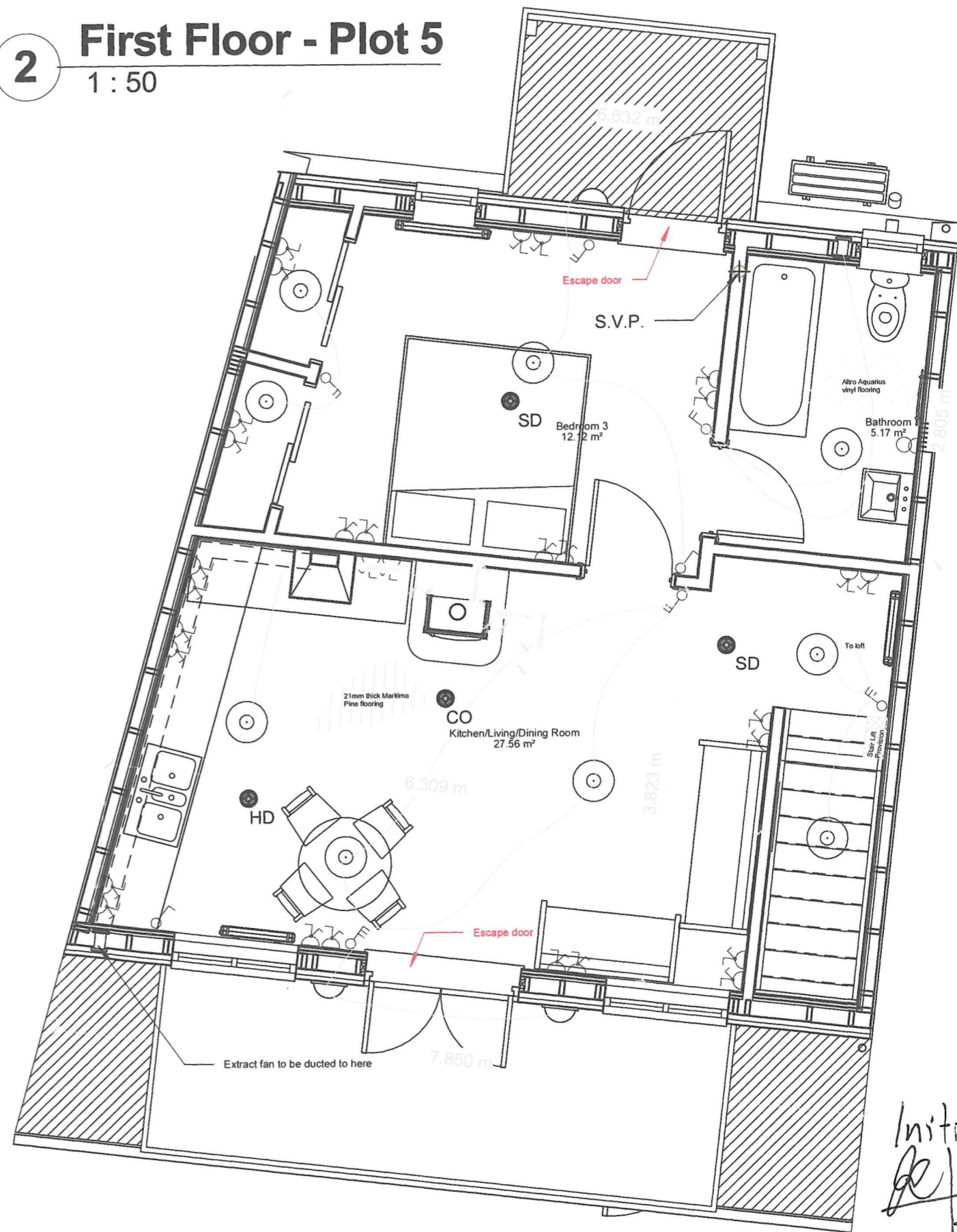
1 : 50



VISUAL SCALE 1:50 @ A3

2 First Floor - Plot 5

1 : 50



Initial
R
K



greenleafdb@live.co.uk

01309 677 802

www.greenleafdb.co.uk

Studio 18, Altyre Stables, Forres, Moray IV36 2SH
A Scottish Company - SC337079

Design & Construction Services
Low Impact
Super Insulated
Modular
Timber Frame Structures
Off-Grid Systems
Affordable Housing
Eco-Offices, Eco-Mobiles
Custom Designs
and Holiday Chalets

No.	Description	Date

Plots 1 - 6 Terrace

West Whins

Plot 5 - Plans

Project number GL00120213

Date 01/01/2016

Drawn by JWC

Checked by RJW

A133

Scale on A3 paper: 1 : 50