



2 Highlands Taunton TA1 4HP





Located in the ever popular Highlands in Sherford, within easy reach of the town centre and walking distance of Vivary Park is this 4 bedroomed Art-Deco detached house now in need of modernisation throughout with enclosed garden to rear of quarter of an acre, garage, useful outbuilding and ample driveway parking. No onward chain.





Features

- Entrance Hall
- Living Room
- Lounge
- Dining Room with door to garden
- Kitchen with door to garden
- Shower Room
- Master Bedroom with door to South West facing Balcony
- 3 Further Bedrooms
- Bathroom
- WC
- Loft Room

- Enclosed established gardens of quarter of an acre
- Detached Garage and ample driveway parking
- Work Room with Utility Room

- Gas central heating
- Castle School catchment

- Council tax band F

- What3words:
///invite.hands.limes







Highlands is situated within easy reach of the centre of Taunton, the County Town of Somerset.

The town is a bustling, forward-looking town with excellent amenities, a good selection of independent and high street shops, distinctive restaurants, cafés, a wealth of history and sporting facilities including the County Cricket Ground.

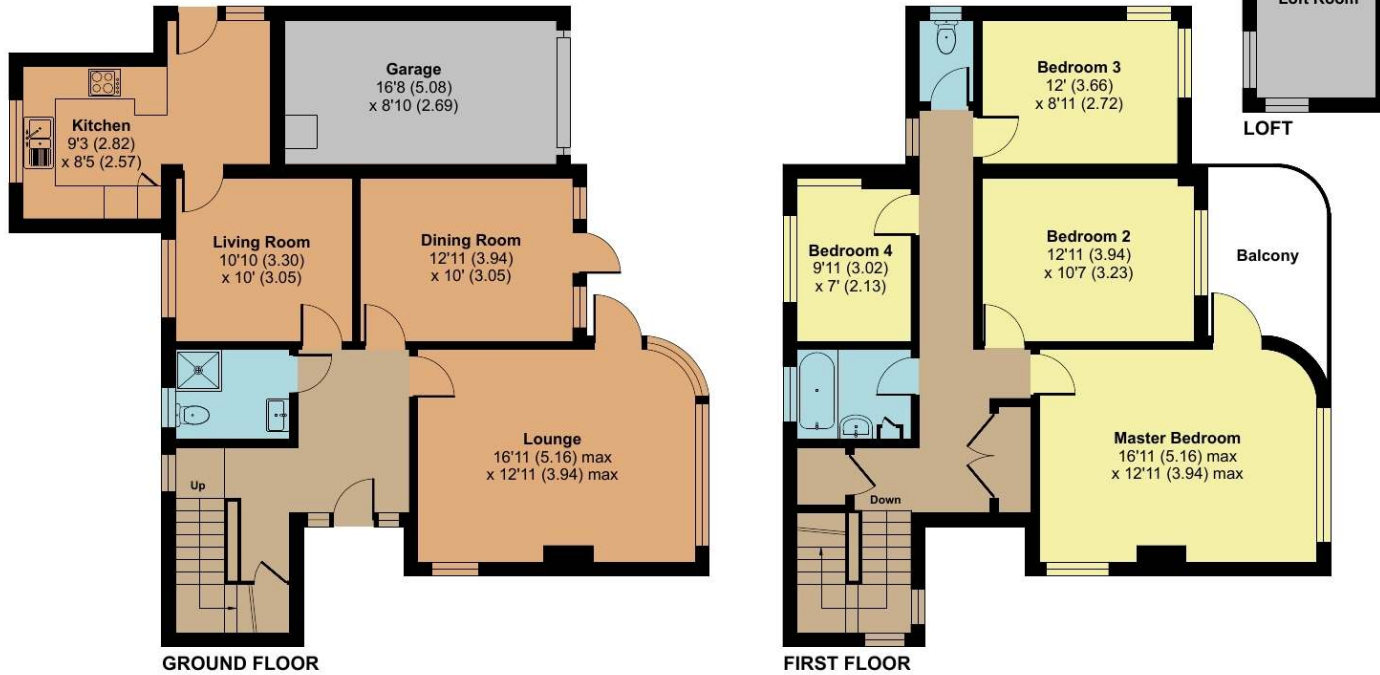
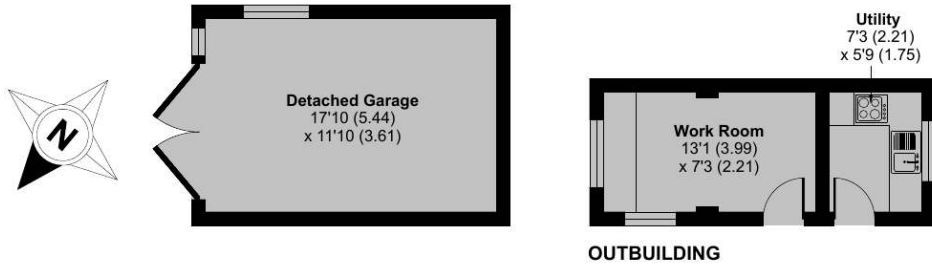
Taunton benefits from a main line railway station linking to London Paddington in less than 2 hours and excellent communications for the M5 motorway at junction 25, situated on the eastern side of the town.

Taunton also offers a good selection of both state and independent schools including Castle School, Taunton School, King's and Queen's Colleges and Richard Huish Sixth Form College.



2 Highlands, Taunton, TA1 4HP

Approximate Area = 1646 sq ft / 152.9 sq m
 Outbuilding & Garages = 495 sq ft / 45.9 sq m
 Total = 2141 sq ft / 198.8 sq m
 For identification only - Not to scale



Viewing strictly through the selling agents:

Robert Cooney

Corporation Street, Taunton,
Somerset TA1 4AW

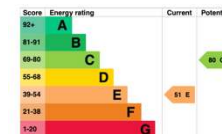
Telephone 01823 230 230

E-mail taunton@robertcooney.co.uk

Website robertcooney.co.uk



Floor plan produced in accordance with RICS Property Measurement Standards incorporating International Property Measurement Standards (IPMS2 Residential). © nīchecom 2024. Produced for Robert Cooney. REF: 1124675



For clarification, we wish to inform prospective purchasers that: these particulars are set out as a general outline only for the guidance of intended purchasers, and do not constitute, nor constitute part of, an offer or contract; all descriptions, dimensions, references to condition and necessary permission for use and occupation, and other details, are given without responsibility and any intending purchasers should not rely on them as statements or representation of fact, but must satisfy themselves by inspection or otherwise as to the correctness of each of them; no person in the employment of Robert Cooney has any authority to make or give any representation or warranty whatever in relation to this property; we have not carried out a detailed survey nor tested the services, appliances and specific fittings.

**robert
cooney**

