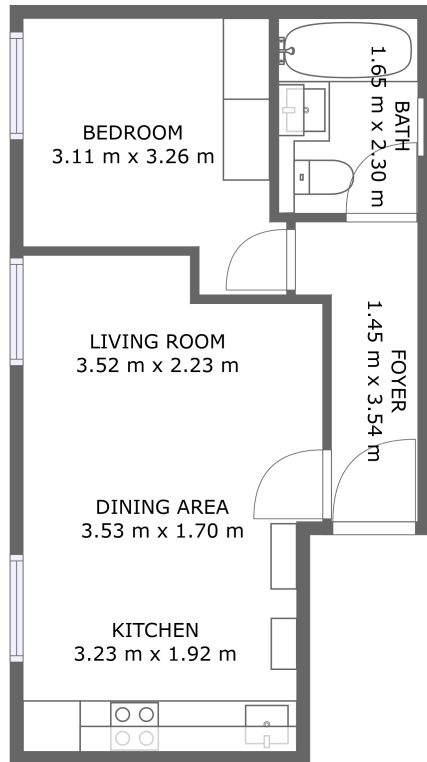


21 chatsworth road, Flat 4, London, United kingdom, Flat 4

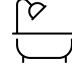


FLOOR 1

Property summary

 **0** Garages


 **1** Bedrooms

 **1** Bathrooms

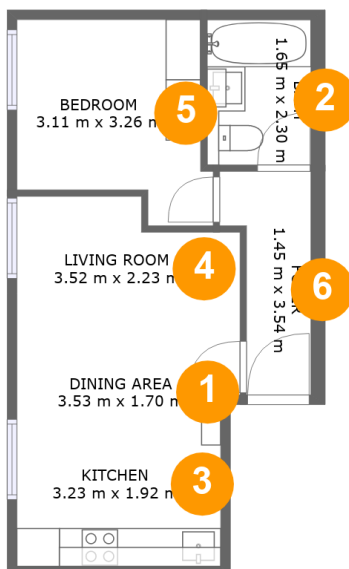
 **0** Half baths

 **1** Floors

 **36** Gross living area m²

 **36** Total m²

21 chatsworth road, Flat 4, London, United kingdom, Flat 4



Room dimensions

Floor 1

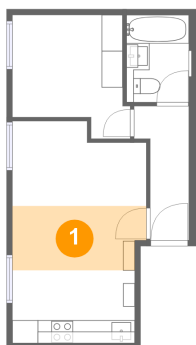
Total m2: 36

Living area: 36

#		Dimensions	m2	Counted as living area
1	Dining Room	3.53 m x 1.70 m	6 m2	Yes
2	Bath	1.65 m x 2.30 m	4 m2	Yes
3	Kitchen	3.23 m x 1.92 m	6 m2	Yes
4	Living Room	3.52 m x 2.23 m	7 m2	Yes
5	Bedroom	3.11 m x 3.26 m	8 m2	Yes
6	Entry	1.45 m x 3.54 m	4 m2	Yes

21 chatsworth road, Flat 4, London, United kingdom, Flat 4

1 Floor 1 - Dining Room



Dimensions: 3.53 m x 1.70 m

Area: 6 m²

Counted as living area: Yes

Heated: Yes

Finished: Yes

Enclosed: Yes

Contiguous:
Yes

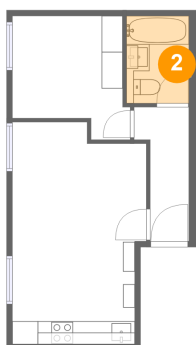
Permitted: Yes

Wet space: No

Addition: No

Conversion: No

2 Floor 1 - Bath



Dimensions: 1.65 m x 2.30 m

Area: 4 m²

Counted as living area: Yes

Heated: Yes

Finished: Yes

Enclosed: Yes

Contiguous:
Yes

Permitted: Yes

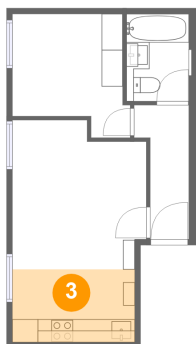
Wet space: Yes

Addition: No

Conversion: No

21 chatsworth road, Flat 4, London, United kingdom, Flat 4

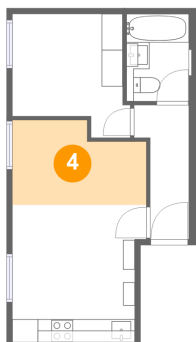
3 Floor 1 - Kitchen



Dimensions: 3.23 m x 1.92 m
Area: 6 m²
Counted as living area: Yes

Heated: Yes
Finished: Yes
Enclosed: Yes
Contiguous: Yes
Permitted: Yes
Wet space: No
Addition: No
Conversion: No

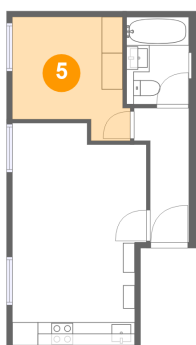
4 Floor 1 - Living Room



Dimensions: 3.52 m x 2.23 m
Area: 7 m²
Counted as living area: Yes

Heated: Yes
Finished: Yes
Enclosed: Yes
Contiguous: Yes
Permitted: Yes
Wet space: No
Addition: No
Conversion: No

5 Floor 1 - Bedroom

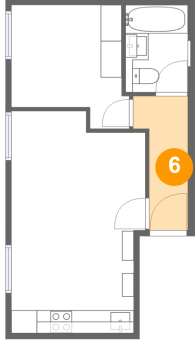


Dimensions: 3.11 m x 3.26 m
Area: 8 m²
Counted as living area: Yes

Heated: Yes
Finished: Yes
Enclosed: Yes
Contiguous: Yes
Permitted: Yes
Wet space: No
Addition: No
Conversion: No

21 chatsworth road,Flat 4,London,United kingdom, Flat 4

6 Floor 1 - Entry



Dimensions: 1.45 m x 3.54 m
Area: 4 m²
Counted as living area: Yes

Heated: Yes
Finished: Yes
Enclosed: Yes
Contiguous: Yes
Permitted: Yes
Wet space: No
Addition: No
Conversion: No