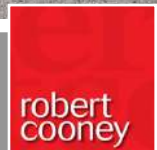




1 School Road Monkton Heathfield TA2 8PB

£290,000



Situated in this popular area of Monkton Heathfield within 2.5 miles from the centre of town is this well-presented and extended South facing 4 bedroomed end-terraced house with enclosed garden to rear and driveway parking for 2 cars.





Features

- Entrance Hall
- Living Room
- Open Plan Kitchen / Dining / Garden Room with Range Style cooker and French doors to garden
- Utility Room
- Cloakroom
- Master Bedroom with fitted wardrobe
- 3 Further Bedrooms
- Family Bathroom with separate shower

- Enclosed garden to rear
- Driveway parking for 2 cars

- Gas central heating
- Double glazing

- Council tax band B

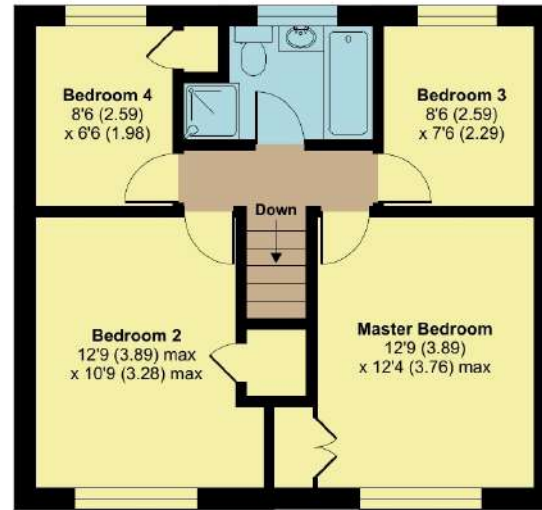
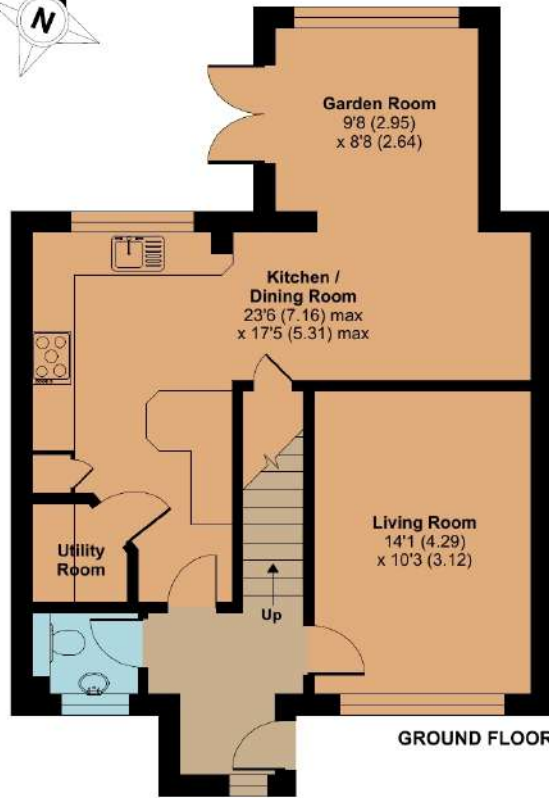
- What3words:
///menu.legs.nooks



1 School Road, Monkton Heathfield, Taunton, TA2 8PB

Approximate Area = 1143 sq ft / 106.1 sq m

For identification only - Not to scale



Viewing strictly through the selling agents:

Robert Cooney

Corporation Street, Taunton,
Somerset TA1 4AW

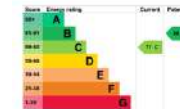
Telephone 01823 230 230

E-mail taunton@robertcooney.co.uk

Website www.robertcooney.co.uk



Floor plan produced in accordance with RICS Property Measurement Standards incorporating International Property Measurement Standards (IPMS2 Residential). © nichecom 2024. Produced for Robert Cooney. REF: 1111311



For clarification, we wish to inform prospective purchasers that: these particulars are set out as a general outline only for the guidance of intended purchasers, and do not constitute, nor constitute part of, an offer or contract; all descriptions, dimensions, references to condition and necessary permission for use and occupation, and other details, are given without responsibility and any intending purchasers should not rely on them as statements or representation of fact, but must satisfy themselves by inspection or otherwise as to the correctness of each of them; no person in the employment of Robert Cooney has any authority to make or give any representation or warranty whatever in relation to this property; we have not carried out a detailed survey nor tested the services, appliances and specific fittings.

**robert
cooney**