



31 Cairnside, High Wycombe, Buckinghamshire, HP13 7SB

Guide Price | £350,000

Property Features

- Two bedroom semi-detached house
- Driveway parking and garage
- Tucked away location
- Ideal investment or First-time purchase
- Tastefully decorated living area
- Modern kitchen and bathroom
- Quiet Cul-de-sac
- Walking distance to the Rye
- Access to the town and train station
- EPC 72 C / Council Tax Band C

Full Description

Nestled in the vibrant town of High Wycombe is this beautifully presented semi-detached house offering an excellent opportunity for those seeking a comfortable and stylish home. Boasting two bedrooms, one bathroom, a well-maintained garden, and the added convenience of a garage, this property is perfect for couples, small families, or those looking to downsize.

The house features two tastefully decorated bedrooms, each offering a cosy and private space. Large windows invite plenty of natural light, creating an airy and inviting atmosphere. There is a well-appointed bathroom, designed for both style and functionality, providing a modern and relaxing space for residents.

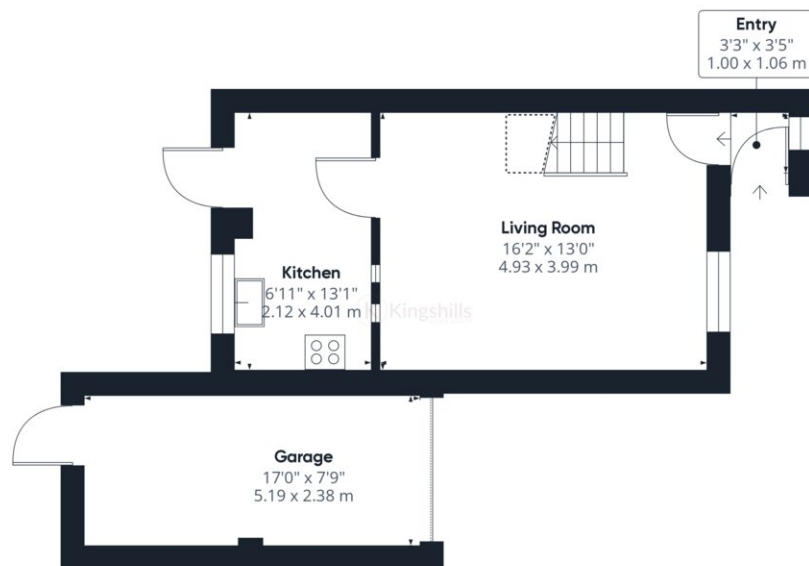
The interior of the house is thoughtfully designed to maximize space and comfort. The living areas are well-presented, with a layout that allows for easy furniture arrangement and a welcoming ambiance. To the rear of the house is the kitchen which is equipped with modern appliances and ample storage space. It is both functional and aesthetically pleasing, making it a delightful space for cooking and entertaining.

Step outside to a beautifully landscaped garden, offering a private retreat for outdoor relaxation and entertaining. The well-maintained greenery provides a serene backdrop, perfect for enjoying the fresh air and sunshine. The property comes with the added convenience of a garage, providing secure parking or additional storage space.

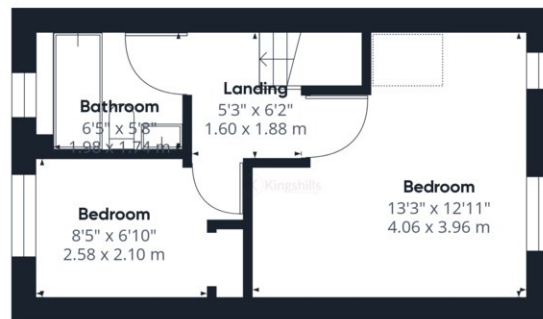
This semi-detached house in High Wycombe not only offers a comfortable and well-presented living space but also provides easy access to the town's amenities and attractions. Whether you're looking for a peaceful retreat or an active lifestyle, this property is a perfect fit. Don't miss the chance to make this house your home and embrace the best of Buckinghamshire living.







Ground Floor



Floor 1

Approximate total areaⁿ
735.57 ft²
68.34 m²

Reduced headroom
14.83 ft²
1.38 m²

Excluding balconies and terraces

 Reduced headroom
(below 1.5m/4.92ft)

While every attempt has been made to ensure accuracy, all measurements are approximate, not to scale. This floor plan is for illustrative purposes only.

GIRAFFE360