



Myze Farm House, West Wycombe, High Wycombe, Buckinghamshire, HP14 3BA

Asking Price | £3,250

Property Features

- Detached House
- Seven Bedrooms
- Accommodation Over Three Floors
- 4 Bathroom/Shower Rooms
- Character Features
- Views Over Local Countryside
- Outbuildings For Storage
- Private Garden
- Parking Available
- Available Now

Full Description

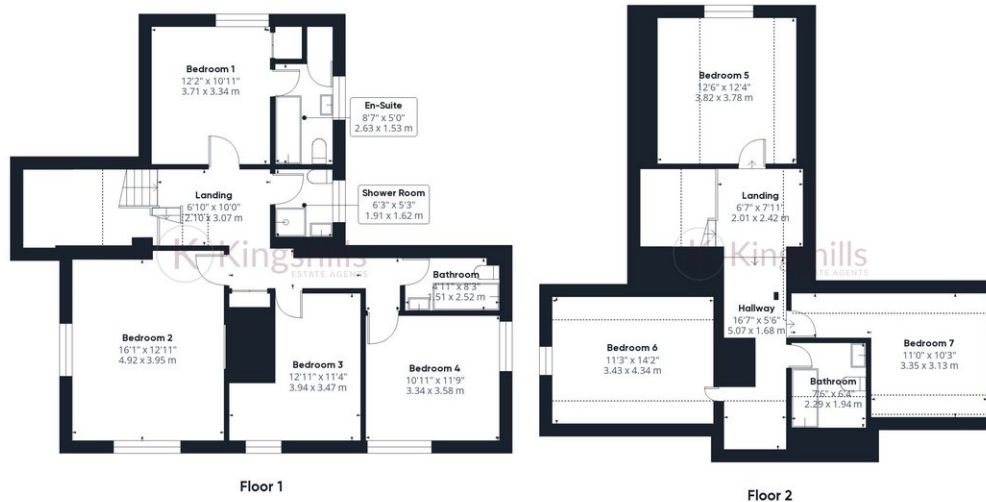
An exceptional Grade II listed detached house offering a unique blend of historic charm and modern living. This stunning property is arranged over three floors, providing spacious and versatile accommodation with four reception rooms, seven bedrooms and four bathrooms/shower rooms.

The property is surrounded by picturesque countryside and enjoys a generous garden, outbuildings for storage, and ample parking. Perfect for those seeking a characterful retreat in a tranquil setting.

Available Now on an Unfurnished Basis.







Approximate total area⁽¹⁾

2485.6 ft²
230.92 m²

Reduced headroom

251.04 ft²
23.32 m²

(1) Excluding balconies and terraces

Reduced headroom
..... Below 5 ft/1.5 m

While every attempt has been made to ensure accuracy, all measurements are approximate, not to scale. This floor plan is for illustrative purposes only.

Calculations are based on RICS IPMS 3C standard.

GIRAFFE360