

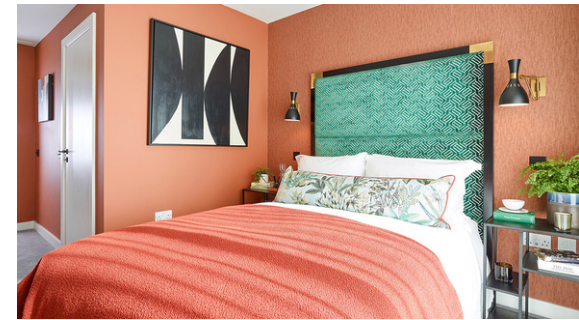


Q Investments  
International

2 Bedroom 2 bath Apartment / Flat,  
Saffron Wharf, London Dock, Wapping, London E1

<https://qinvestments.london>





## New Build 2 Bedroom Apartment for Sale in London Dock new development, London E1.

- 2 bedrooms
- 2 bathrooms
- 8th floor
- South-East aspect
- 774 sq. ft.
- Est. Completion: April 2024 - September 2024
- Hotel-style facilities at The Club
- Panoramic views towards the City of London or Canary Wharf

## Saffron Wharf, London Dock, Wapping, London E1

New Build 2 Bedroom Apartment for Sale in London Dock new development, London E1.

Size: 849 square feet

Taking comfort and convenience as their benchmark, interiors feature clean lines, on-trend muted colours, tactile surfaces and cutting-edge fittings.

Each element of these design led apartments has been carefully considered and finished to the highest of standards. Timeless materials and textures combine seamlessly to create functional yet contemporary interiors.

Come home to a personal sanctuary – the ideal accompaniment to a busy London lifestyle.

Saffron Wharf, a magnificent 18-storey building, is the latest phase at London Dock offering beautifully designed Manhattan, 1, 2, and 3 bedroom contemporary homes, broad boulevards and lush courtyard gardens inspired by the history of the area.

This exciting new destination, a thriving new cultural quarter, featuring a magnificent choreographed central water feature and the finest selection of high quality new homes. Designed by award-winning architects Patell Taylor, London Dock's new development is comprising 1,800 highly specified Manhattan, one, two and three-bedroom apartments, situated just moments from Tower Bridge, the Tower of London and the City.

The development also features 200,000 square feet of new commercial space to create a new vibrant destination as well as 7.5 acres of landscaped open space, incorporating water features and seating areas, as well as a luxury gym and spa facilities for use by residents.

Wapping is a truly authentic destination, filled with independent cafés and restaurants, which has for hundreds of years been a vibrant part of London life. By the river, Hermitage Community Moorings attracts sailing barges, tugs and small boats, keeping alive Wapping's river heritage.

To book a viewing, please contact [office@qinvestments.london](mailto:office@qinvestments.london) or call +44 7985487333.





## CONTACT US

Have a question for us? Please get in touch.

## Q INVESTMENTS INTERNATIONAL LTD



T: +44 (0) 7985 487333

E: [office@qinvestments.london](mailto:office@qinvestments.london)

## INVESTMENTS, REAL ESTATE & LIFESTYLE

### Stay connected

Please visit our social media pages.

You can now find us on [Facebook](#), [Twitter](#), [Linkedin](#) and [Instagram](#) and many more!