

Head Office:
Dixon Kelley Estate Agents
1 Penn Court
Station Road, West Moors
Dorset. BH22 0JJ

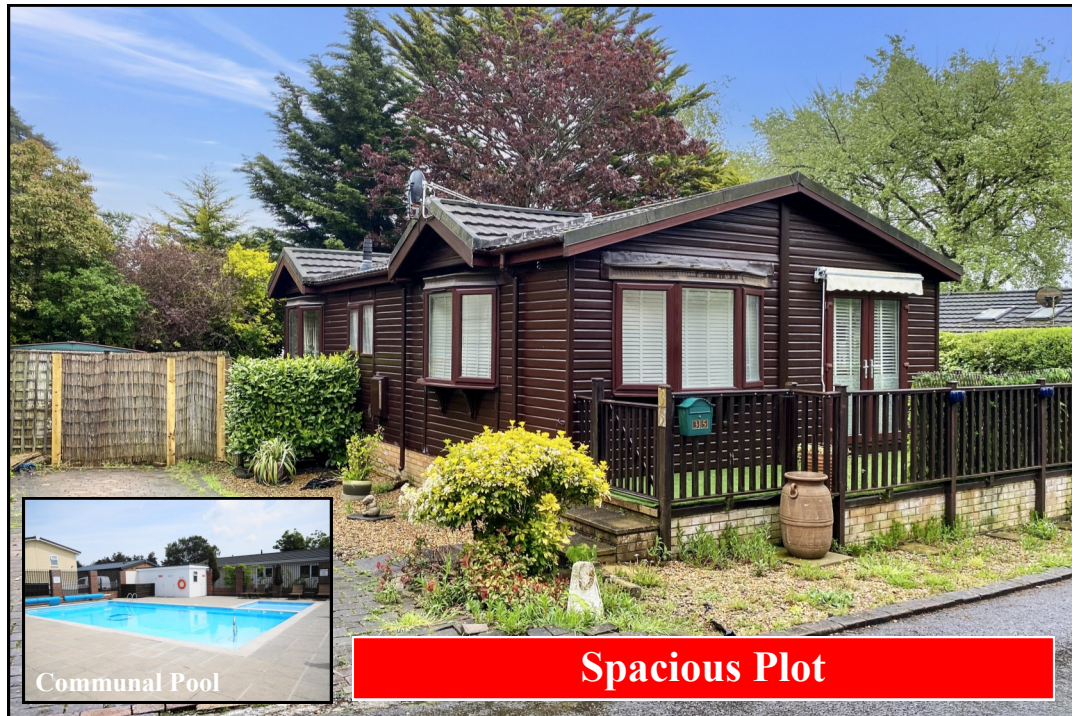
DORSET PARK HOMES

DRAFT

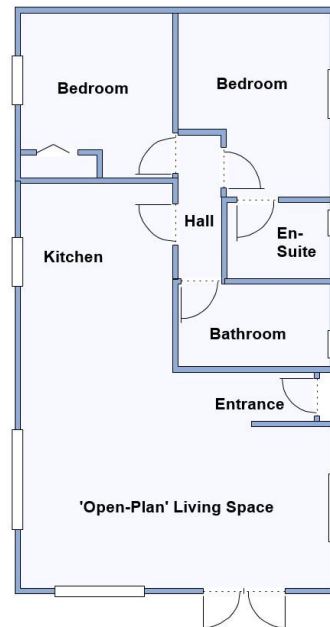
www.dorsetparkhomes.com

Telephone: 01202 877511

35 Tall Trees Park, Matchams Lane, Christchurch, Dorset. BH23 6TT



Spacious Plot



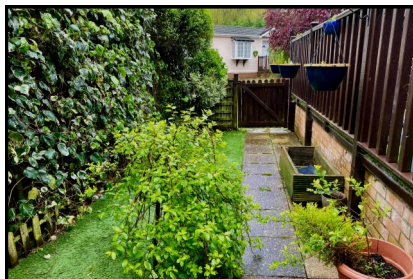
This drawing has been prepared for diagrammatic purpose only. Not to scale

2 Bedroom Park Home approx 36' x 20'

Accommodation & approximate room dimensions:

- Tingdene 'Country Lodge' circa 2008
- 'Open Plan Living Space' approx 24'2" x 19" max. A large bright room with double doors to RAISED DECK. Ample space for lounge & dining suite.
- Kitchen: Range of floor and wall cupboards. Space for oven with cooker hood over. Plumbing for washing machine. Integrated fridge/freezer. LED spot lights. Breakfast bar with display cabinet over.
- Bedroom 1: approx 11'4" x 9'4" max.
- En-Suite Shower Room
- Bedroom 2: approx 10'2" x 9'4". Fitted wardrobes.
- Bathroom: Panelled bath, wash basin & WC.
- Gas Central Heating (LPG Gas) & Double-Glazing
- Double length block driveway
- Secluded Patio garden with areas of artificial lawn. 2 Garden Sheds.
- Age Restriction 45+ Not more than 1 Dog & Cat
- Communal Heated Outdoor Swimming Pool, Playground & Fishing Lake. Electric security gates.

Raised Deck & Patio Garden



Price £165,000

VIEWING STRICTLY BY APPOINTMENT WITH THE VENDOR'S AGENT Dorset Park Homes 01202 877511

IMPORTANT NOTE: These particulars are believed to be correct but their accuracy is not guaranteed. They do not form part of any contract. Nothing in these particulars shall be deemed to be a statement that the property is in good structural condition or otherwise, nor that any of the services, appliances, equipment or facilities are in good working order or have been tested. Purchasers should satisfy themselves on such matters prior to purchase Ref.W04780

Pitch Fee: approx £452 per month including water & sewerage

Subject to Annual Review

Council Tax Band: 'A'

Tenure: 1983 Mobile Homes Act Agreement

The recommended specialist in Park Home sales
Proprietor: Simon Dixon

