

**Head Office:**  
Dixon Kelley Estate Agents  
1 Penn Court  
Station Road, West Moors  
Dorset. BH22 0JJ

# DORSET PARK HOMES

**DRAFT**

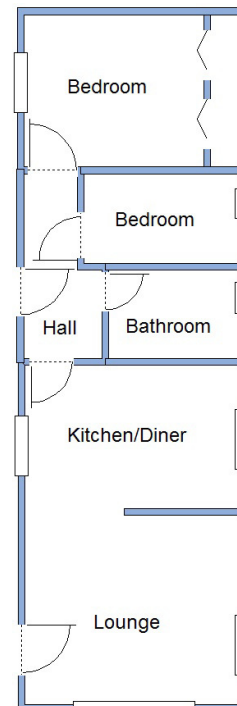
[www.dorsetparkhomes.com](http://www.dorsetparkhomes.com)

**Telephone: 01202 877511**

**92a Gladelands Park, Ringwood Road, Ferndown, Dorset. BH22 9BW**



**Beautifully Presented Park Home**

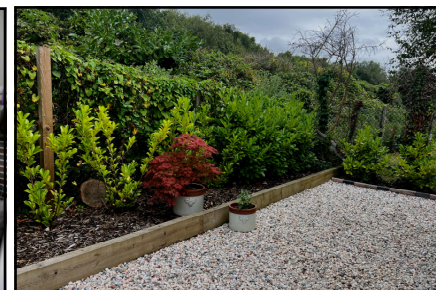
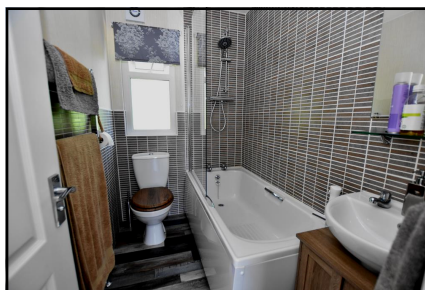
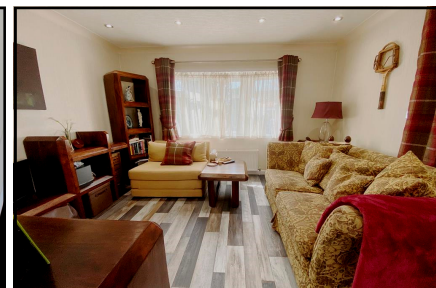
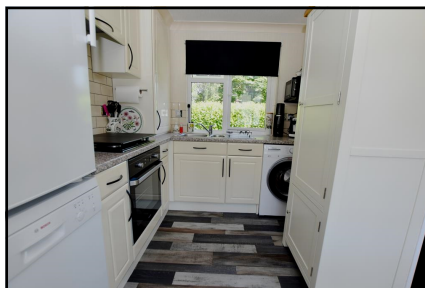


## 2-Bedroom Park Home - approx 36' x 12'

Accommodation & approximate room dimensions:

- Stately Albion Park Home 2014
- Hall: Cloaks cupboard
- Kitchen/Diner: approx 11'7" x 7'5". Fitted kitchen with range of floor and wall cupboards. Built-in oven, hob & cooker hood. Space and plumbing for washing machine & dishwasher or fridge. Free standing Larder Unit. Cupboard housing combination gas boiler (untested). Opening to:
- Lounge: approx 11'7" x 9'3". Feature fireplace. Door to garden. Bay window.
- Bedroom 1: approx 9'8" x 7'8" Plus built-in wardrobes.
- Bedroom 2: approx 7'9" x 4'5". Built-in wardrobe.
- Bathroom: Modern suite comprising panelled bath with thermostatic shower over. Wash basin & WC.
- Gas Central Heating (system untested)
- PVCu Double-Glazing
- Delightful Landscaped Garden with Concrete Shed
- Parking for 1 Car
- Age Restriction 50+ No Pets Allowed
- Popular well maintained Residential Park near to shops & services.

## Close to shops & services



**Price: £129,950**

**Pitch Fee: approx £216.99 per month**

**Subject to Annual Review**

**Council Tax Band: 'A'**

**Tenure: 1983 Mobile Homes Act Agreement**

**VIEWING STRICTLY BY APPOINTMENT WITH THE VENDOR'S AGENT Dorset Park Homes 01202 877511**

**IMPORTANT NOTE:** These particulars are believed to be correct but their accuracy is not guaranteed. They do not form part of any contract. Nothing in these particulars shall be deemed to be a statement that the property is in good structural condition or otherwise, nor that any of the services, appliances, equipment or facilities are in good working order or have been tested. Purchasers should satisfy themselves on such matters prior to purchase Ref.W04620

*The recommended specialist in Park Home sales*  
Partner: Simon Dixon

